

IMAGINE JOHN LENNON

Imagine no possessions

I wonder if you can

No need for greed or hunger

A brotherhood of man

Imagine all the people sharing all the world, you

You may say I'm a dreamer

But I'm not the only one

I hope some day you'll join us

And the world will be as one





IMAGINE...

**A PUBLIC/PRIVATE
ALLIANCE TO MAKE STRONGER
CONNECTIONS BETWEEN ECONOMIC
SECURITY AND HEALTH**

**Arkansas Public Health Association
Pathways to Health Equity
May 10, 2018**



IMAGINE...A PUBLIC/PRIVATE ALLIANCE

WELCOME

W. STEVEN CARTER
ARKANSAS DEPARTMENT OF HEALTH



SPEAKERS

ABBY HUGHES HOLSCLOW
ASSET FUNDERS NETWORK

ANNA STRONG
ARKANSAS CHILDREN'S

DR. LAURA HENDRIX
UNIVERSITY OF ARKANSAS SYSTEM DIVISION OF
AGRICULTURE COOPERATIVE
EXTENSION SERVICE



MODERATED Q/A

W. STEVEN CARTER
ARKANSAS DEPARTMENT OF HEALTH

INTRODUCTIONS



W. STEVEN CARTER
CHIEF FINANCIAL
OFFICER

ARKANSAS
DEPARTMENT OF HEALTH



ABBY HUGHES HOLSCLAW
SENIOR DIRECTOR

ASSET FUNDERS NETWORK



ANNA STRONG
EXECUTIVE DIRECTOR OF
CHILD ADVOCACY AND
PUBLIC HEALTH

ARKANSAS CHILDREN'S



DR. LAURA HENDRIX
ASSOCIATE PROFESSOR FOR
FINANCE AND CONSUMER
ECONOMICS

UNIVERSITY OF ARKANSAS
SYSTEM DIVISION OF
AGRICULTURE COOPERATIVE
EXTENSION SERVICE

BEGINNINGS

September 13, 2016

Little Rock Branch, St. Louis Federal Reserve Bank

✧ Arkansas Funders Network presenting

✧ ADH attending

What It's Worth: Building More Financially Prosperous
Arkansans through Savings and Education

ADVANCING

ASSET FUNDERS NETWORK facilitated ...

✧ ADH connection with Delaware



✧ ADH and ACH connection

✧ UACES added to conversations

✧ VISION: *Pursue a public/private collaboration to strengthen connections between economic security and health for all Arkansans.*

Abby Hughes Holsclaw, Asset Funders Network



Social determinants of health

“The social determinants of health are the conditions in which people are born, grow, work, live, and age, and the wider set of forces and systems shaping the conditions of daily life.

These forces and systems include economic policies and systems, development agendas, social norms, social policies and political systems.”

- World Health Organization

“Health happens where we live, learn, work and play.”

- Robert Wood Johnson Foundation

Social determinants of health

Economic Stability	Neighborhood and Physical Environment	Education	Food	Community and Social Context	Health Care System
Employment	Housing	Literacy	Hunger	Social integration	Health coverage
Income	Transportation	Language	Access to healthy options	Support systems	Provider availability
Expenses	Safety	Early childhood education		Community engagement	Provider linguistic and cultural competency
Debt	Parks	Vocational training		Discrimination	Quality of care
Medical bills	Playgrounds	Higher education			
Support	Walkability				

Health Outcomes
 Mortality, Morbidity, Life Expectancy, Health Care Expenditures, Health Status, Functional Limitations

Life Course Investment Opportunities



IN UTERO - TODDLER
0-3 YEARS



**CHILDHOOD -
ADOLESCENCE**
3-17 YEARS



YOUNG ADULthood
18-30 YEARS



MIDDLE ADULthood
30-50 YEARS



OLDER ADULthood
50-70+ YEARS



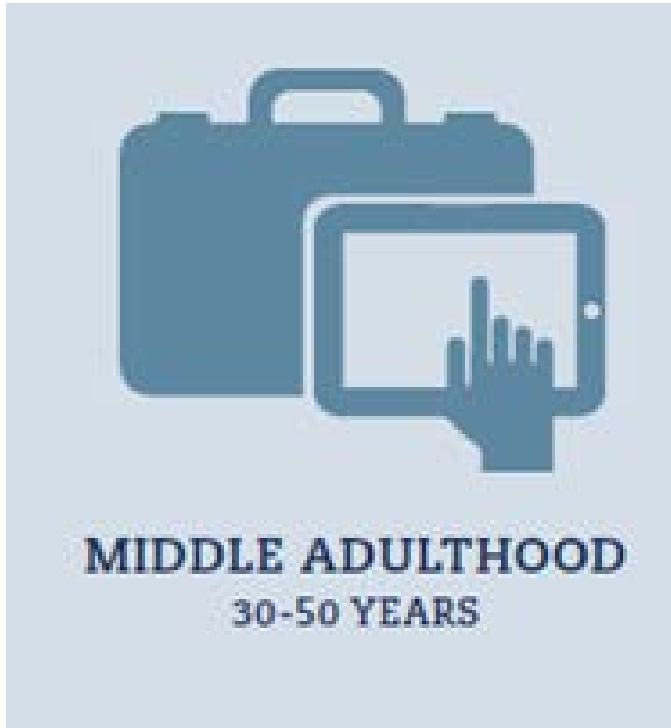
- **Home visitation with financial coaching**
- **CDAs with preventive health and early childhood development**
- **Multi-generational supports**
- **Family-friendly community development**
- **Dual language, culturally appropriate programs**



- **CDA deposits at key milestones**
- **Financial education for entire families**
- **Hands-on financial skills tied to developmental goals (e.g., first job)**



- **IDAs tied to preventive health behaviors**
- **Workplace wellness with asset-based incentives**
- **Paid family and sick leave**
- **Financial coaching**
- **Homeownership and retirement preparation**



- **Financial counseling and support for those with new chronic disease diagnosis**
- **Tax deferred savings for care of elderly parents**
- **Homeownership support and protection**



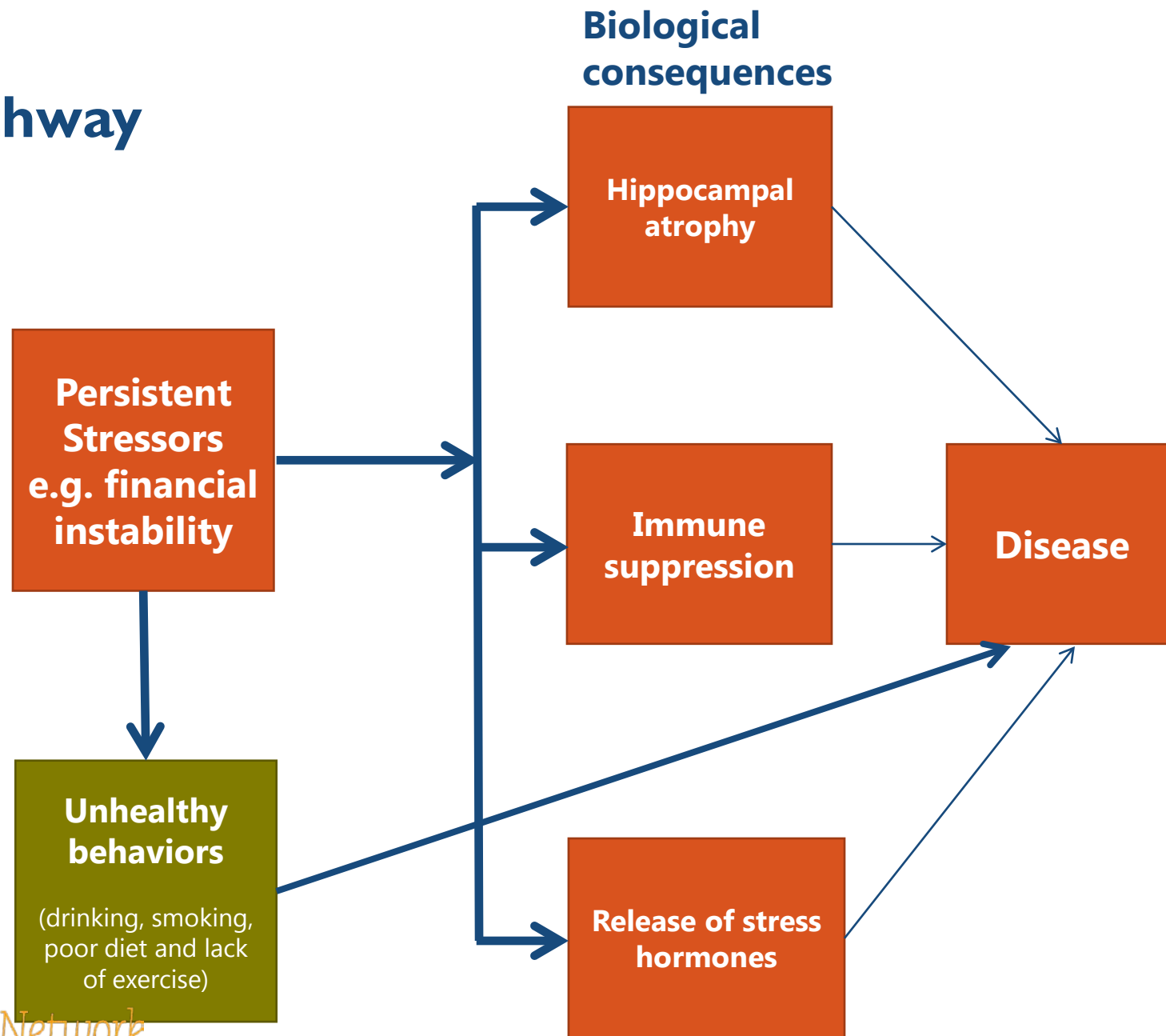
- **Financial advice to preserve assets**
- **Planning for increased health care costs**
- **Coordination of health and housing services**
- **Community health workers with focus on financial security**

How does wealth impact health?

Three explanations:

- **Biologically: Stress pathway**
- **Education**
- **Greater future orientation**

Stress Pathway



Education leads to...

- **Better access to and understanding of health information**
- **Changes in norms and behaviors (e.g. lower rates of smoking)**

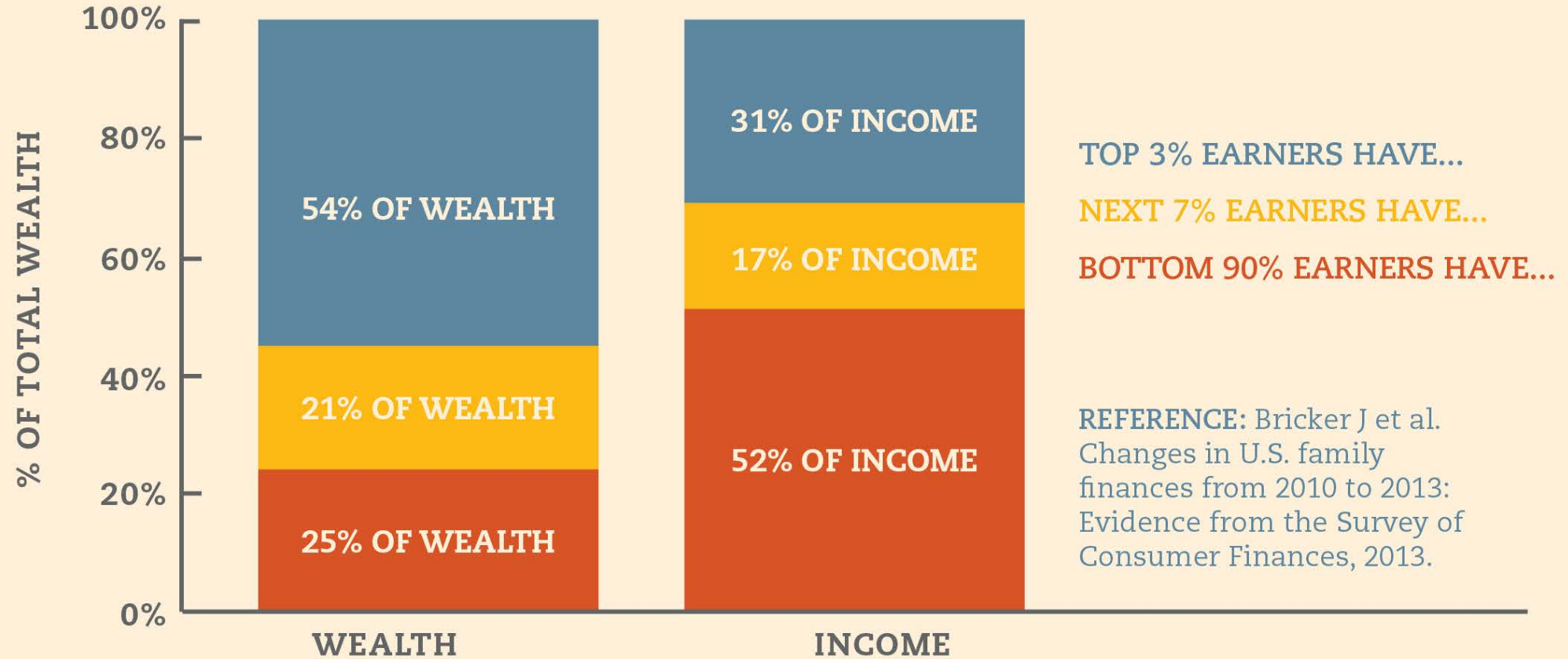


Greater Future Orientation



- **Savings allows one to envision the future**
- **Evidence to support savings in childhood associated with college attendance and completion**

WEALTH & INCOME DISTRIBUTION IN AMERICA, 2013



PRESA COMMUNITY CENTER



- **41 years in Southside neighborhood of San Antonio**
- **Transitioned to empowerment model in last 10 years**
- **Created Project Puente**
 - **Community Health Worker (CHW) Certification program**

PROJECT PUENTE



- **Job training: targets non-traditional learners**
- **Job creation**
- **CHW are members of the community**

PROJECT PUENTE



CHW follow up with patients after discharge

- **Readmission rates reduced substantially, only 7% among Project Puente patients**
- **Improves health of low income and high risk patients**
- **Cost savings per year about \$360,000**



HOSPITALS • RESEARCH • FOUNDATION

Anna Strong, Arkansas Children's





HOSPITALS • RESEARCH • FOUNDATION

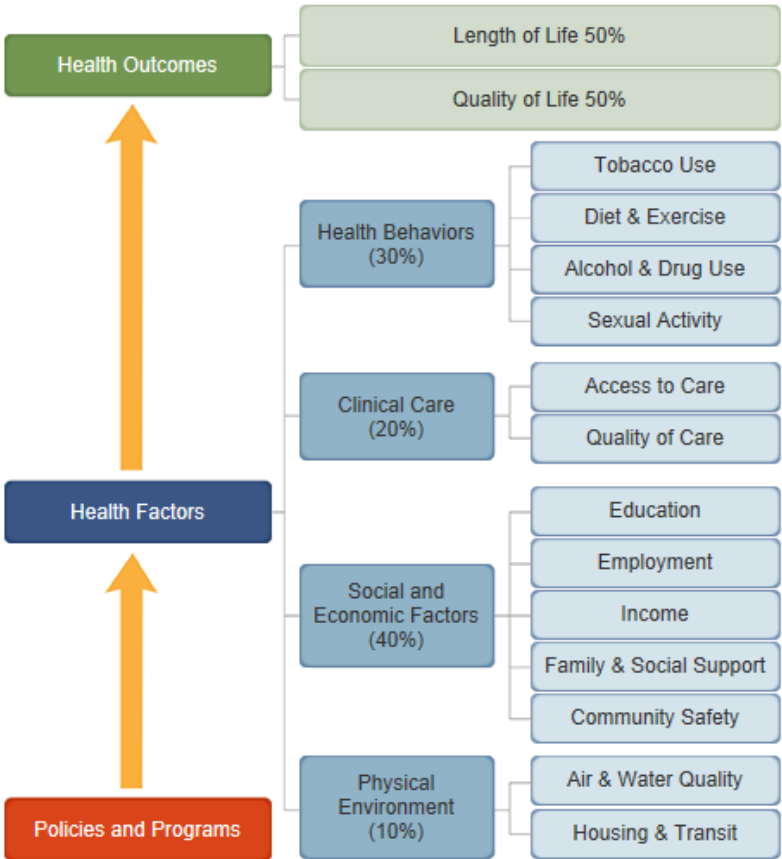
Supporting Health and Wealth by Improving Child Health in Arkansas

Anna Strong, MPH, MPS

November 2017



Health and Wealth are Linked



County Health Rankings model © 2014 UWPHH



We have work to do....

- Annie E. Casey Foundation ranking: 45th
- 39% of school-age children overweight/obese
- Less than half of kids on Medicaid get well-child checks
- Highest teen birth rate in country
- 19% of high school students have considered suicide

...but there are bright spots!

- Less than 5% of children lack health coverage (*down from 10% 2007, 20% in 1997*)
- 19% of kids have untreated cavities; 43% have sealants (*improved from 23%/15% in 2007*)
- Child injury death rate dropped 39% since 2000 (*major progress in motor vehicle deaths*)

Economic Security Influences

ALL ACH Needs Assessment Priorities

1. Access to Quality Care
2. Childhood Obesity
3. Mental Health and Substance Use
4. Reproductive Health
5. Social Issues
6. Parenting Supports
7. Oral Health
8. Food Insecurity
9. Child Injury
10. Immunization



To improve health outcomes,
the health care system must partner to address
social determinants of health,
including those influenced by economic security

We Can't Change Outcomes Alone: Natural Wonders Partnership Council



Partnerships in Action

- 3 Examples of Partnerships
 - Screening for social needs
 - Improving access to care through school-based initiatives
 - Reaching communities with evidence-based programs

Screening for Social Needs



Medical-Legal Partnership

School-Based Clinical Programs



Reach Into the Community Using Evidence-Based Programs



Cooking Matters



Home Visiting



**Arkansas
Children's**

HOSPITALS • RESEARCH • FOUNDATION

TOGETHER, WE CAN MAKE AN IMPACT



DIVISION OF AGRICULTURE
RESEARCH & EXTENSION

University of Arkansas System

University of Arkansas System Division of Agriculture
Cooperative Extension Service

Laura Hendrix, PH.D., Associate Professor
Accredited Financial Counselor®



COOPERATIVE EXTENSION

Extending Knowledge, Changing Lives

Federal Partner: NIFA-USDA



BIOENERGY, CLIMATE,
AND ENVIRONMENT

FOOD PRODUCTION
AND SUSTAINABILITY

YOUTH, FAMILY,
AND COMMUNITY

FOOD SAFETY
AND NUTRITION

INTERNATIONAL
PROGRAMS

USDA

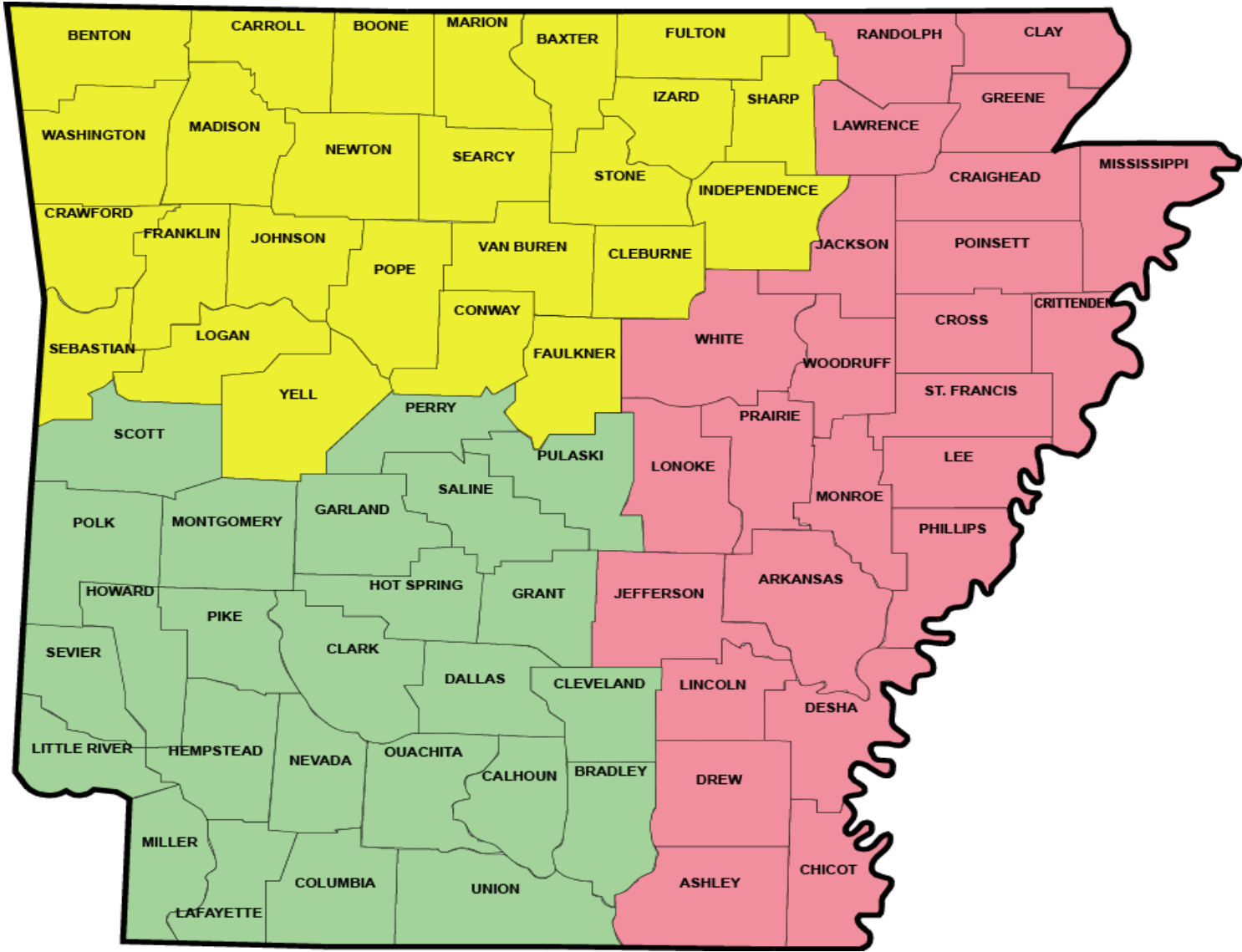
NIFA

NATIONAL INSTITUTE OF FOOD AND AGRICULTURE

Cooperative Extension Service

- Provides non-formal education and learning activities throughout the country.
- Federal, state, and local support.
- Emphasizes the application of research-based knowledge to create positive changes and improve quality of life.
- Extension educators teach skills, such as personal finance, to individuals and families in an effort to increase financial security for Arkansans.

Available across the nation and in all 75 Arkansas counties



Cooperative Extension Program Areas

- Youth Development, 4-H
- Agriculture
- Community & Economic Development
- Family & Consumer Sciences
 - Nutrition and Health
 - Family Life, Personal Development
 - Leadership and Volunteerism
 - Personal Finance, Consumer Economics



Programs/Resources

- Basic Money Management
- Debtor Education
- Managing Money & Love
- Stretch Your Dollar
- Wise Use of Credit
- Debt Management
- Saving and Investing
- Retirement Planning
- Estate Planning
- Small Steps to Health & Wealth
- 4-H project books & activities
- Consumer Judging
- Consumer Economics
- High School Financial Planning Program
- Money on the Bookshelf
- Reading Makes Cents
- Entrepreneur Camp
- Financial Simulations
 - Get Real – Here's the Deal
 - Ready, Set, Graduate
 - Reality Store

Extension Outreach and Impact 2017

Youth and adults learn the skills they need to increase savings, manage spending, control debt, and build wealth.

More than 29,000 indirect contacts

More than 7,500 in-person program participants

- Increased knowledge and skills – 90%
- Positive behavior change – 72%

Basic Financial Management session participant:

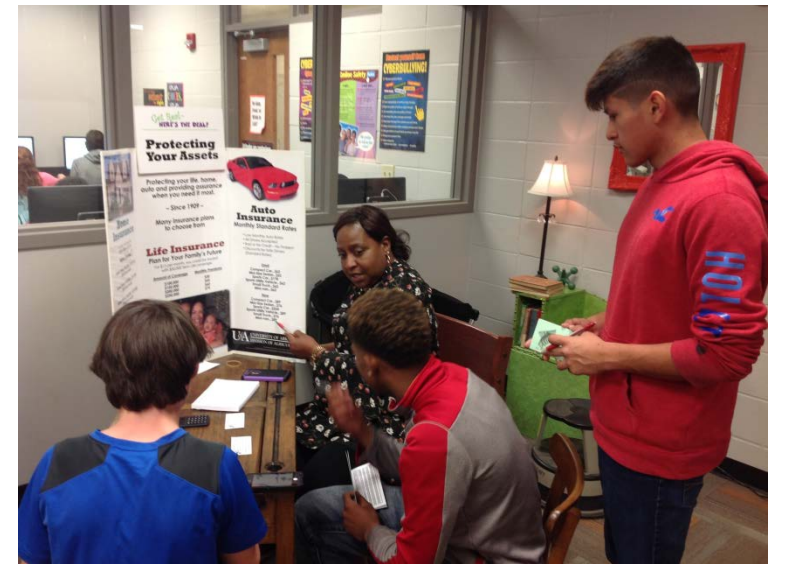
“Now I understand the importance of debt load and emergency savings.”

Estate Planning Seminar participant:

“I had no idea about planning or where to start. Thank you for offering this course.”

High School student:

“This class really opened my eyes to the real world and how important it is to learn how to budget my money.”



Personal finance simulation for youth



Estate planning seminar for farm families

Small Steps to Health and Wealth™



- Developed by the Cooperative Extension Service
- Integrates health and personal finance topics
- Focuses on changing behavior
- Small Steps to Health and Wealth web site: www.uaex.edu/money



www.uaex.edu/money

www.courses.uaex.edu

Follow: uaexMoney



IMAGINE ...

You may say I'm a dreamer
But I'm not the only one
I hope some day you'll join us
And the world will be as one

Public Health Grand Rounds

An Excerpt from a Special
Presentation by US Surgeon General
Jerome M. Adams, MD, MPH
20th US Surgeon General

Questions & Answers

We invite you to come imagine with us!

What is your take away/action step from today's discussion?

Speaker Contacts:

Steve Carter

Abby Hughes Holsclaw

Anna Strong

Dr. Laura Hendrix

Steve.Carter@arkansas.gov

Abby@assetfunders.org

strongac@archildrens.org

lhendrix@uaex.edu