

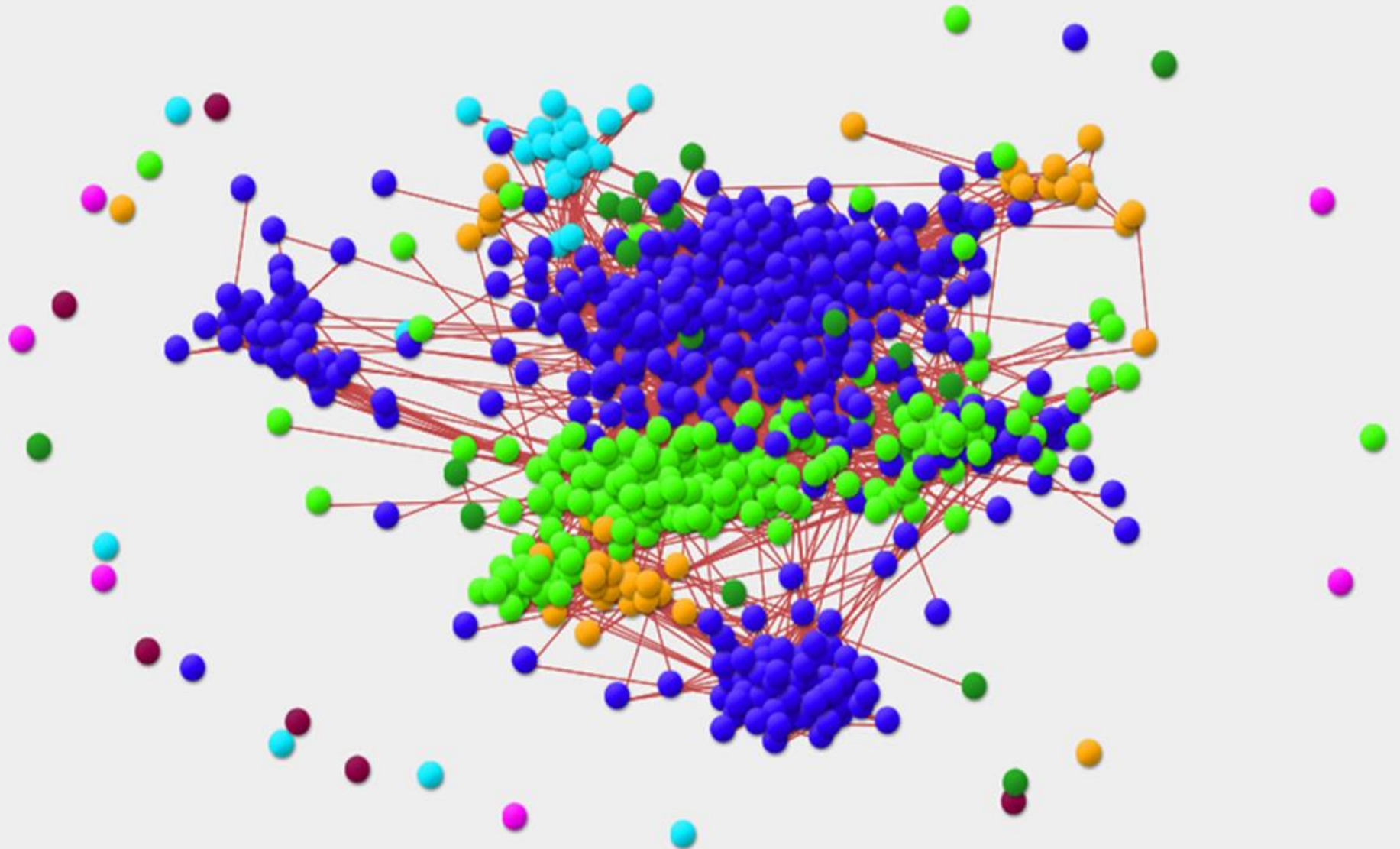
Local Communities Grow Food and Relationships to Navigate around Social Determinants of Health

Jimmy Parks
DrPH RN

My Public Health Practice

- Here's what I do in the course of a day
- Chickens, bees, gardens, repurposing...
and connections
- Building social capital to address the social determinants of health

Community



Food



Food



Food



Food



Food



Food



Social Determinants

Systems and Experts

AHA 2017 | New High Blood Pressure Guidelines



GUIDELINES

PETER BLOCK, MD PAUL WHELTON, MD KIM EAGLE, MD

New High Blood Pressure Guidelines



Social Capital







Education/Nursing Background

- Sociology/Psychology
- Psychiatric Nursing
- The Burn Center at Ark Children's Hospital
- Masters in Health Education Administration
- Doctorate in Public Health Leadership





ARKANSAS
DENCORS



















NO FEEDING THIS STAFF







THIS IS A
TOBACCO-FREE
CAMPUS
THANK YOU
FOR NOT SMOKING





THE
FIELD
Ball











Examples of Current AR Nurse Leaders who Promote COH

Jimmy Parks, RN, DrPH,
Team of Neighbors leader
“I consider myself a
community connector...
connecting local people to
each other and to local
resources...to reduce the
health effects of social
determinants.”



Urban area of Little Rock before and after
community garden and green space.
Improvements to the area continue.

My Public Health Practice

- Chickens, bees, gardens, repurposing...
and connections
- Building social capital to address the social
determinants of health

The theory and “science” behind it



evidence-based practice

- practice-based evidence
- positive deviance

Implications for Research

“The process of developing a novel drug, device or other intervention can take about 14 years and \$2 billion to develop, with a failure rate exceeding 95 percent.” NIH

Growing the Health System

AHA 2017 | New High Blood Pressure Guidelines



GUIDELINES

PETER BLOCK, MD

PAUL WHELTON, MD

KIM EAGLE, MD

New High Blood Pressure Guidelines

Leadership

- What do you do when you see things that other people don't see?

Leadership: A Vision vs. Vision

...so within my community, we are
creating an
Informal Network of Growers

- Team of Neighbors
- The One Inc. – The Van – The Field
- Arkansas Interfaith Power and Light
- people around 12th street, rose city, leawood

Social Capital

Helping “the needy”, “the public”,
“the homeless population.”

Specialists

Quality

Health Literacy

Recommendation 12: (health and health system literacy)

- **Provide patient education about systems/processes of the institution.**

Rationale:

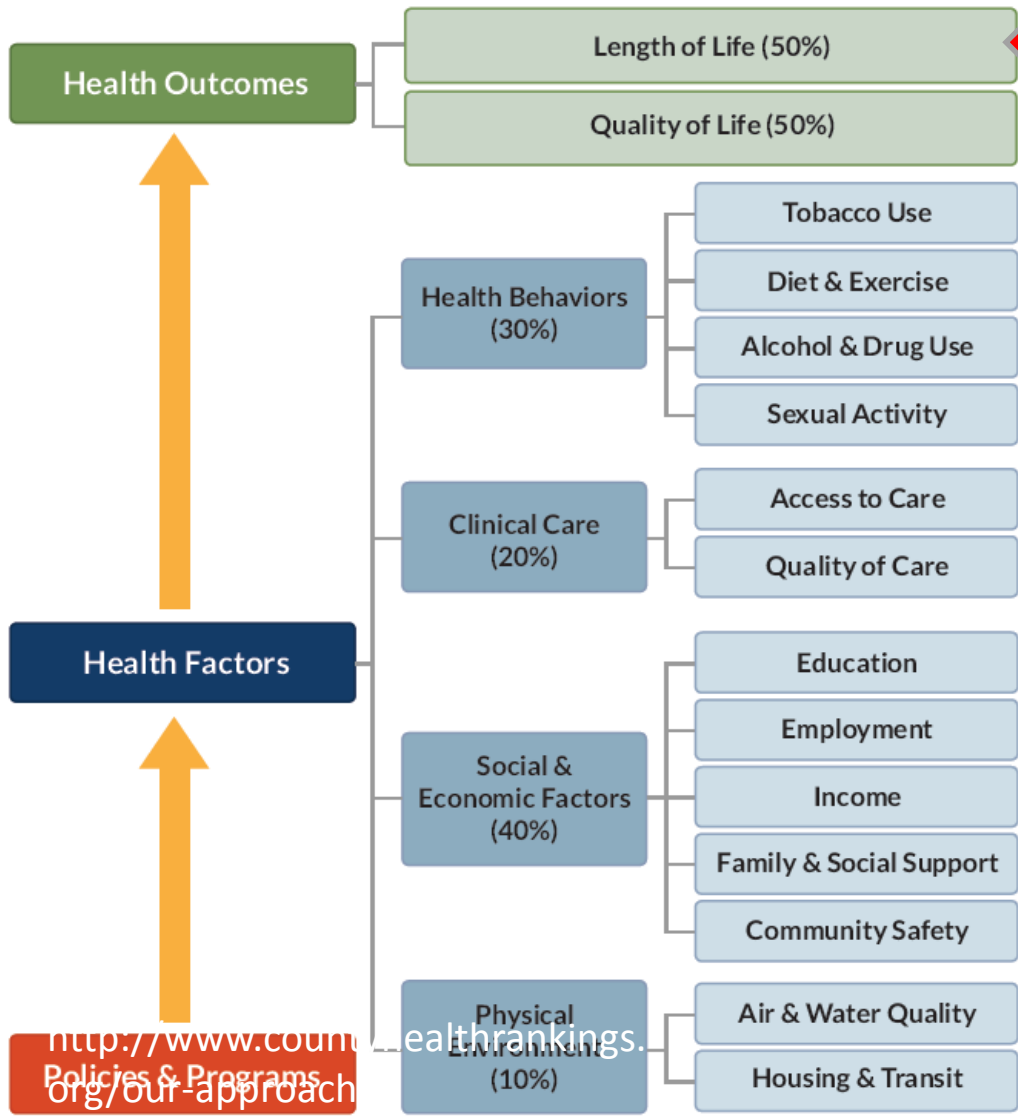
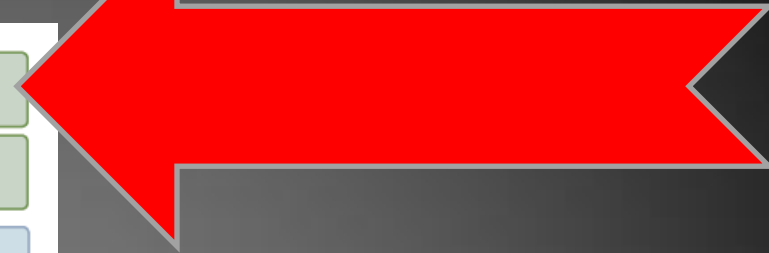
Informed patients are **more cooperative patients.**

OPPOSITES AND NUMBERS

- DICHOTOMIES
- EITHER/OR
- US/THEM
- LEADER/FOLLOWER
- EXPERT/LAYMAN
- MORE IS BETTER
- INFLATED MEANING
- PSEUDO-QUANTITIES

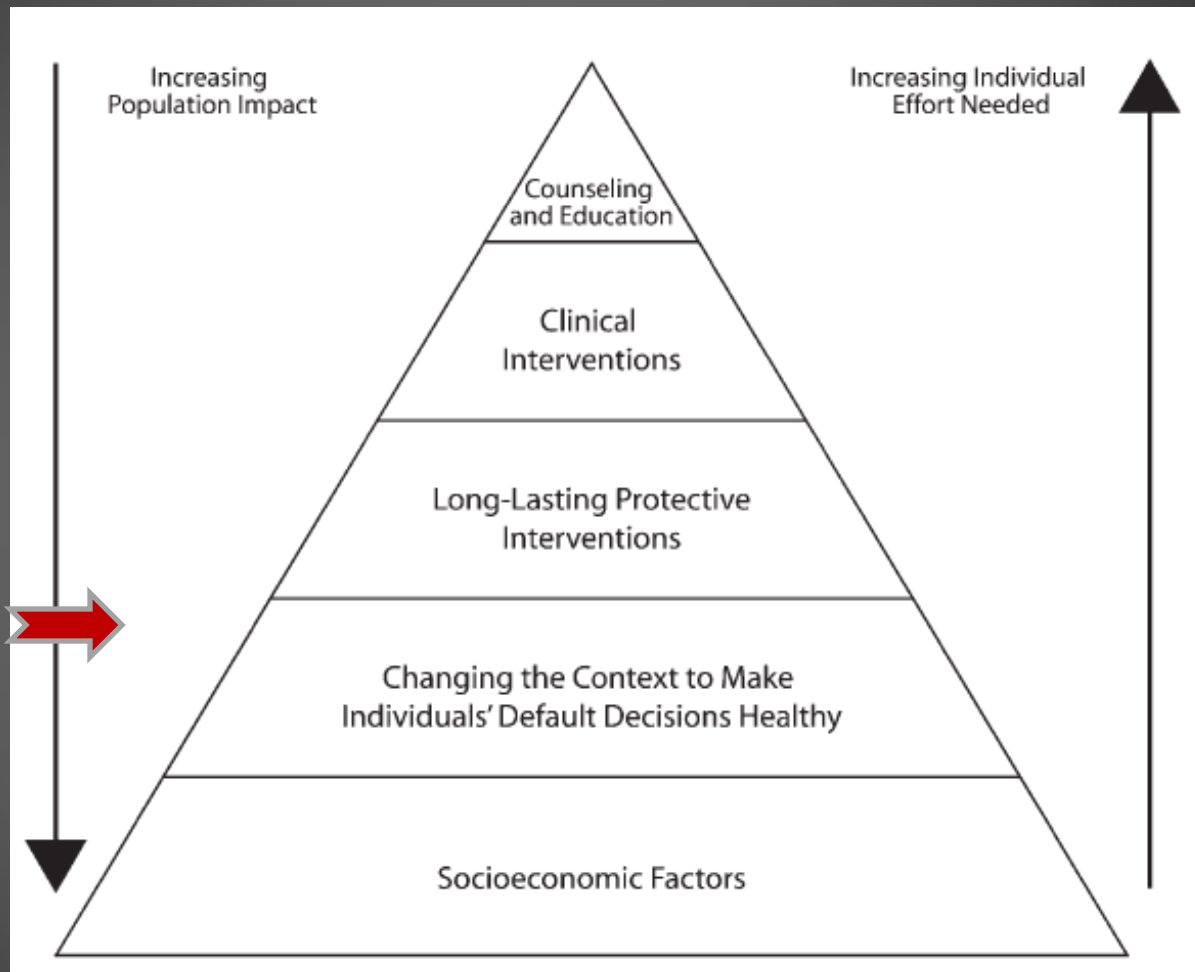
Model of Population Health

County Health Rankings Model



<http://www.countyhealthrankings.org/our-approach>
Policies & Programs

TRICKLE DOWN HEALTH



A Framework for Public Health Action: The Health Impact Pyramid

Healthcare: Right or Privilege?

- Assumes healthcare is something we want
- Assumes access to the health system is good

Campaign Vision

Everyone in America can live a healthier life, supported by a system in which nurses are essential partners in providing care and promoting health.



Robert Wood Johnson Foundation

AARP[®]
Real Possibilities

RWJF Has a New Vision

nurses line up behind institutional visions

Promoting a Culture of Health

- Where good health flourishes across geographic, demographic, and social sectors.
- Where being healthy and staying healthy is an esteemed social value.
- And everyone has access to affordable, quality health care.

The End

PS—I still want to talk more about these:

- Positive Deviance
- Governance as Theory
- Democracy as Diffusion
- Devolution
- Principal-Agent Structure
- Stakeholder
- History – Common Law
- History – Public Health
- Systems Science
- Leadership Ontology
- Nihilism vs Pragmatism
- Socially-situated Individual
- Organization-First
- Social Determinants
- Community Health Workers